



Ashbourne Avenue, Harrow, HA2

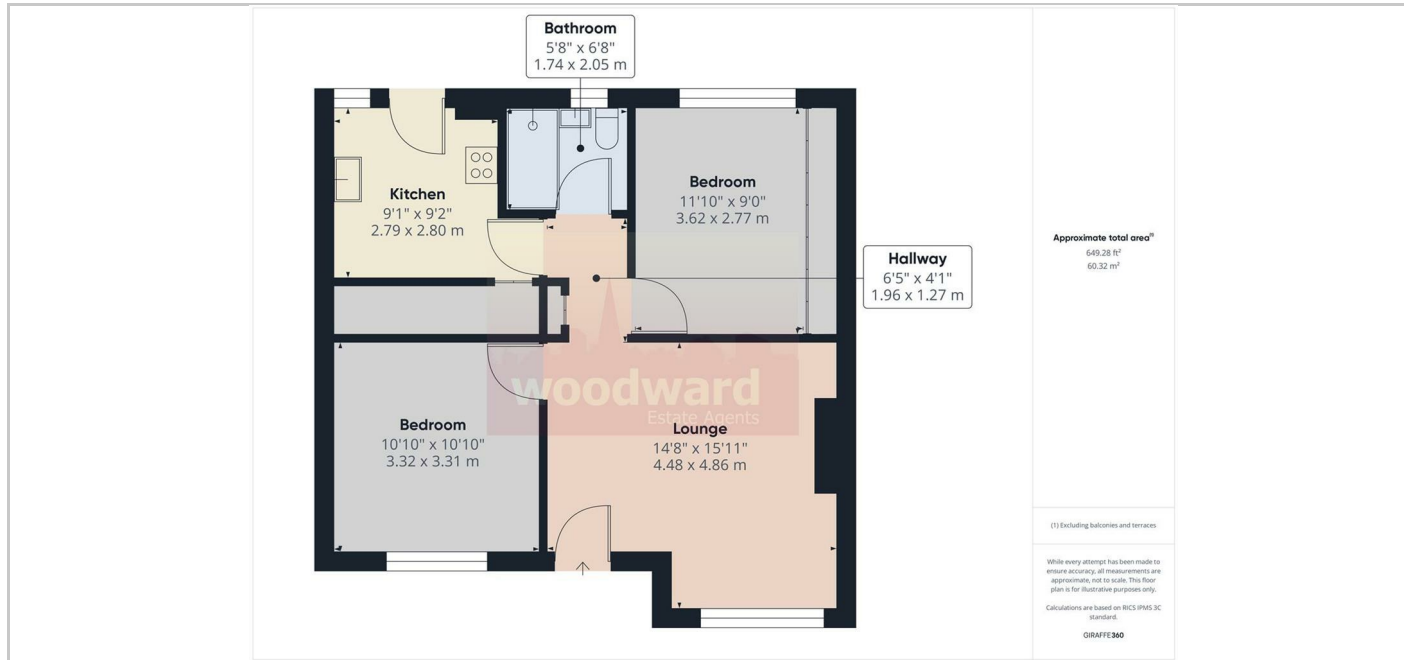
£1,850 Per month



- 2 Double Bedroom Ground Floor Maisonette
- Shower Room
- Small Patio Garden
- Unfurnished
- Fitted Kitchen including dish washer
- Spacious Lounge
- Walking distance to Piccadilly Line Station

THE PROPERTY

Available 7th August. A well-presented ground floor two double bedroom maisonette finished to a high specification, featuring a modern fitted kitchen with dishwasher, contemporary shower room, spacious lounge, laminate flooring, and a small patio garden overlooking open fields. Ideally situated in a quiet cul-de-sac within a short walking distance of the Piccadilly Line station, the property is also conveniently located close to Waitrose and offers easy access to Harrow Town Centre with its excellent shopping facilities and Metropolitan Line/BR station. Offered unfurnished. Energy Rating: C69 Council Tax Band: C



SITUATION

Directions